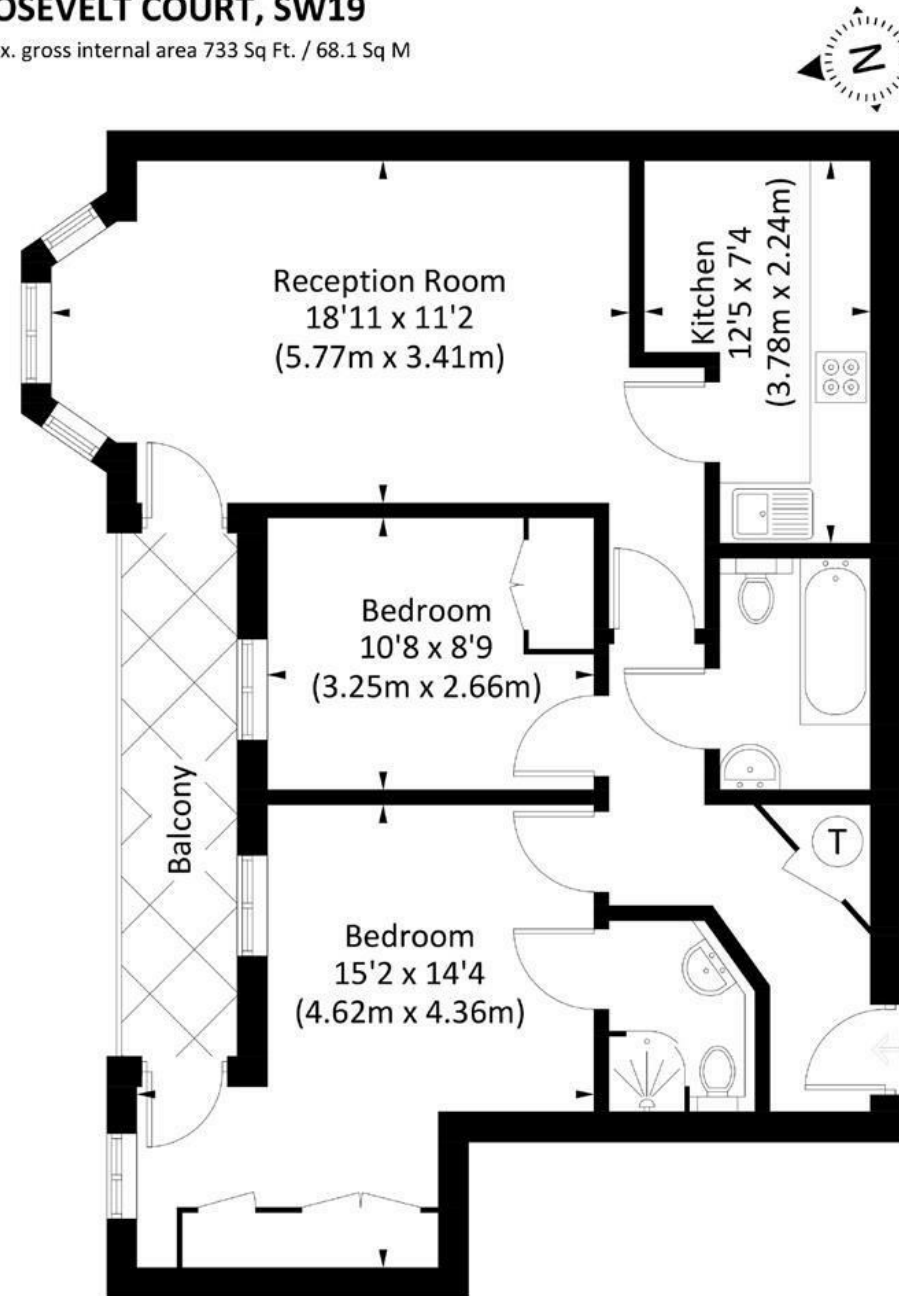


## ROOSEVELT COURT, SW19

Approx. gross internal area 733 Sq Ft. / 68.1 Sq M



### First Floor

Illustration for identification purposes only, measurements are approximate, not to scale. FloorplansUsketch.com © 2018 (ID497203)

**DISCLAIMER**•These particulars are intended to give a fair and substantially correct overall description for the guidance of intending purchasers and do not constitute an offer or part of a contract. Prospective purchasers and/or lessees ought to seek their own professional advice.

•All descriptions, dimensions, areas, references to condition and necessary permissions for use and occupation and other details are given in good faith and are believed to be correct, but any intending purchasers should not rely on them as statements or representations of fact, but must satisfy themselves by inspection or otherwise as to the correctness of each of them.  
•All measurements are approximate.



## Roosevelt Court, Southfields, SW19

A beautifully presented and well located two double bedroom apartment on the first floor of this small, private development in Southfields. Offered on an unfurnished basis and benefiting from a private balcony and allocated off-street parking, the accommodation comprises an entrance hallway, bright reception room with access to the balcony, fully fitted kitchen, principal bedroom with great storage and en suite shower room, a further double bedroom and further bathroom. Roosevelt Court is an attractive development, only built in 2008 and ideally located for the amenities and transport Southfields has to offer as well as being within easy access of Wimbledon Town and Village. Available nohttps://login3.vebraalto.com/#diariesw.



- SMALL PRIVATE DEVELOPMENT
- FITTED KITCHEN
- EN SUITE SHOWER
- PRIVATE BALCONY
- EPC C
- RECEPTION ROOM
- TWO DOUBLE BEDROOMS
- FAMILY BATHROOM
- OFF-STREET PARKING
- COUNCIL TAX BAND E

Per Calendar Month  
**£2,250 Per Calendar Month**



